



Government of India
Ministry of Earth Sciences



India Meteorological Department

PRESS RELEASE-2

Time of issue: 1530 hours IST

Dated: 22nd December, 2024

Sub: Depression over westcentral Bay of Bengal weakened into well marked low pressure area

Yesterday's **Depression** over westcentral Bay of Bengal off Andhra Pradesh coast weakened into a well-marked low pressure over the same region in the evening (1730 hrs IST) of yesterday, the 21st December 2024. It persisted over the same region in the morning of today, the 22nd December 2024. It is likely to move west-southwestwards and reach southwest Bay of Bengal near north Tamil Nadu & south Andhra Pradesh coasts around 24th December.

Warnings:

(i) Rainfall warning:

Andhra Pradesh: Light to moderate rainfall at a few places with heavy rainfall at isolated places is very likely over Coastal Andhra Pradesh during 23th-26th December.

North coastal Tamil Nadu & Puducherry: Light to moderate rainfall at many places is likely over north coastal Tamil Nadu & Puducherry during 24th-26th December with possibility of isolated heavy rainfall on 25th & 26th December.

Coastal Odisha: Light to moderate rainfall at a few places is very likely over coastal Odisha during 24th-25th December with possibility of isolated heavy rainfall on 24th December.

(ii) Wind warning:

Squally weather with wind speed reaching 35-45 kmph gusting to 55 kmph is likely to prevail over westcentral and adjoining southwest Bay of Bengal and along & off Andhra Pradesh coast during 22nd -25th December and Tamilnadu coast during 24th – 25th December.

(iii) Fishermen Warning:

Fishermen are advised not to venture into westcentral & adjoining southwest Bay of Bengal and along & off Andhra Pradesh-north Tamil Nadu coasts during 22nd - 25th December.

All associated graphics have been kept in Annexure-I.

This is the last press release in association with this system. From cyclone warning division. However, regular press release and bulletins shall continue from National Weather Forecasting Centre and concerned regional meteorological centre/state meteorological centres.

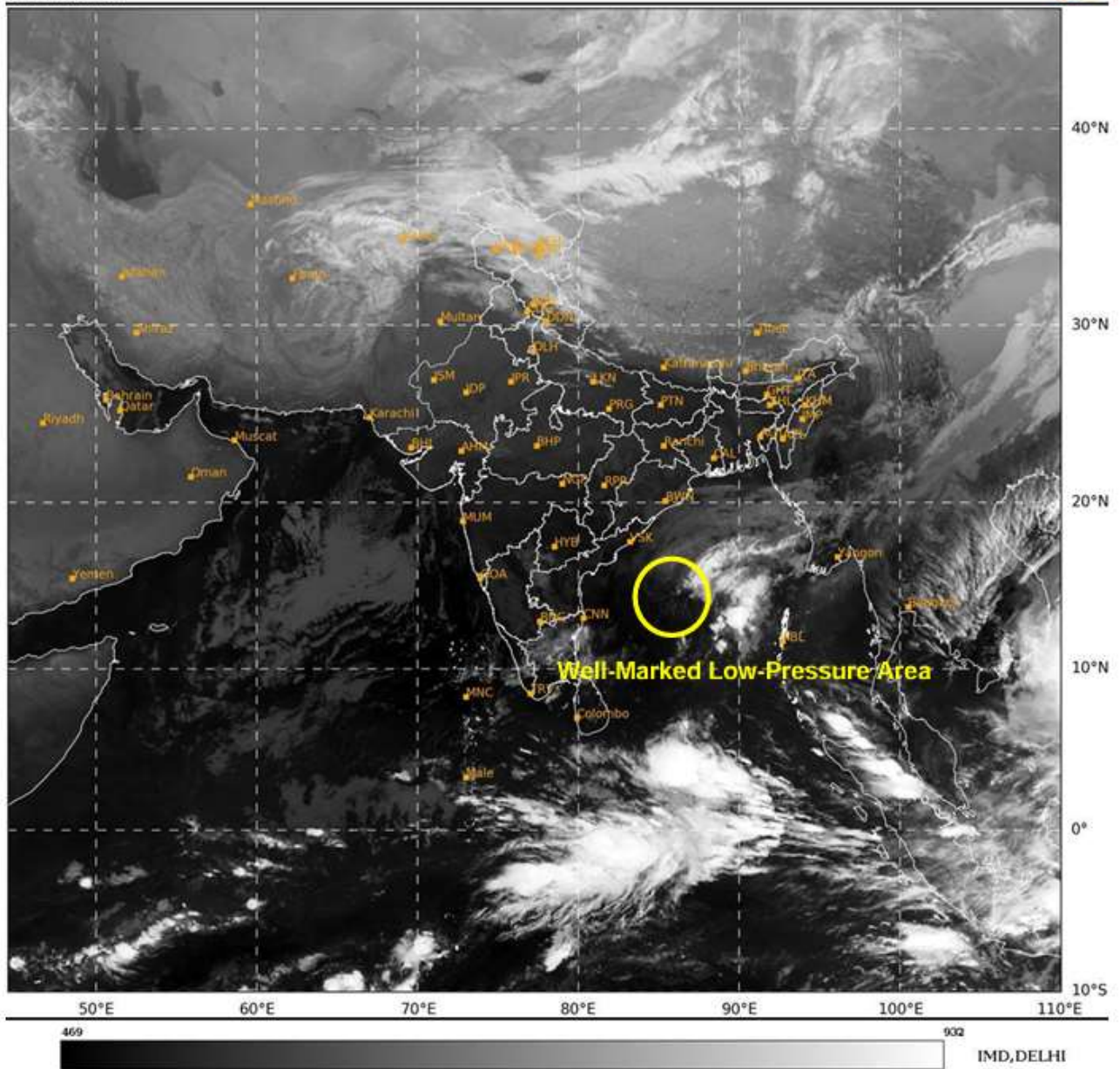
Kindly visit www.rsmcnewdelhi.imd.gov.in and www.mausam.imd.gov.in for weather related updates.

Contact: Cyclone Warning Division, Office of the Director General of Meteorology, India Meteorological Department, Ministry of Earth Sciences, E-mail:cyclonewarningdivision@gmail.com, Website: rsmcnewdelhi.imd.gov.in. Spatial rainfall distribution: Isolated: <25%, A few: 26-50%, Many: 51-75%, Most: 76-100%, Rainfall amount (mm): Heavy rain: 64.5 – 115.5, Very heavy rain: 115.6 – 204.4, Extremely heavy rain: 204.5 or more.

Annexure-I

SAT : INSAT-3DR IMG
IMG_TIR1 10.8 um
LIC Mercator

22-12-2024/(0315 to 0342) GMT
22-12-2024/(0845 to 0912) IST



Contact: Cyclone Warning Division, Office of the Director General of Meteorology, India Meteorological Department, Ministry of Earth Sciences, E-mail: cyclonewarningdivision@gmail.com, Website: rsmcnewdelhi.imd.gov.in. Spatial rainfall distribution: Isolated: <25%, A few: 26-50%, Many: 51-75%, Most: 76-100%, Rainfall amount (mm): Heavy rain: 64.5 – 115.5, Very heavy rain: 115.6 – 204.4, Extremely heavy rain: 204.5 or more.



OBSERVED TRACK OF DEPRESSION OVER WESTCENTRAL BAY OF BENGAL DURING 20TH - 21ST DECEMBER, 2024.

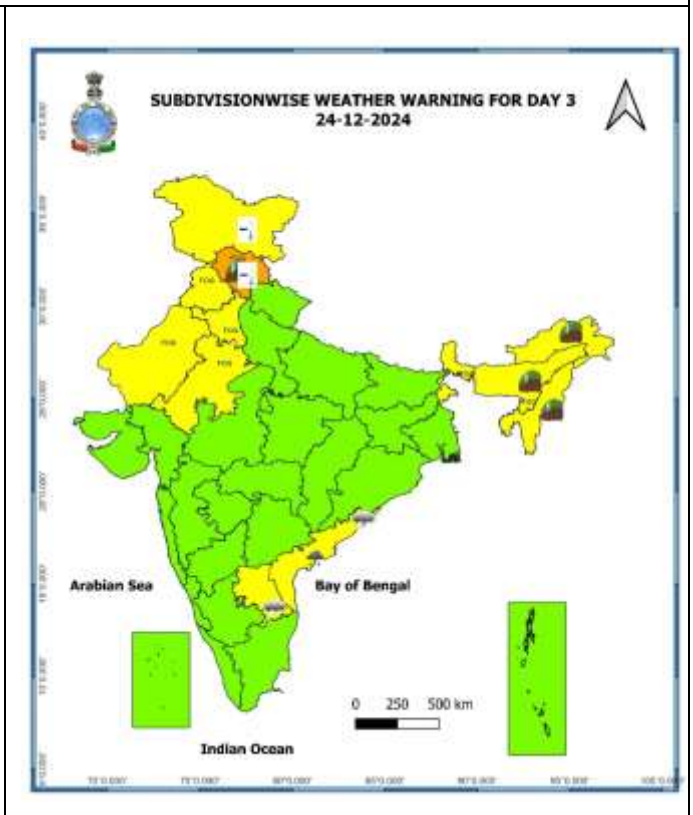
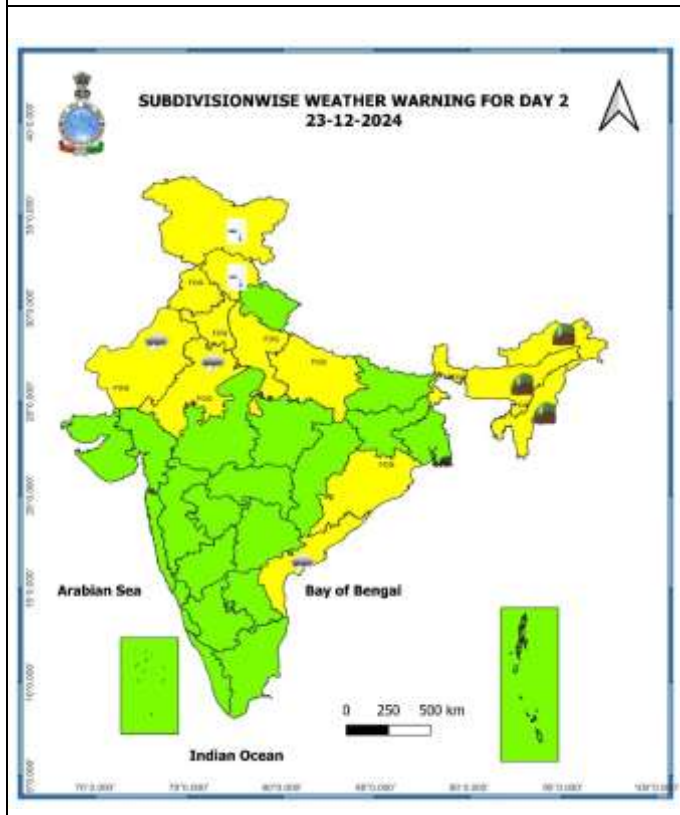
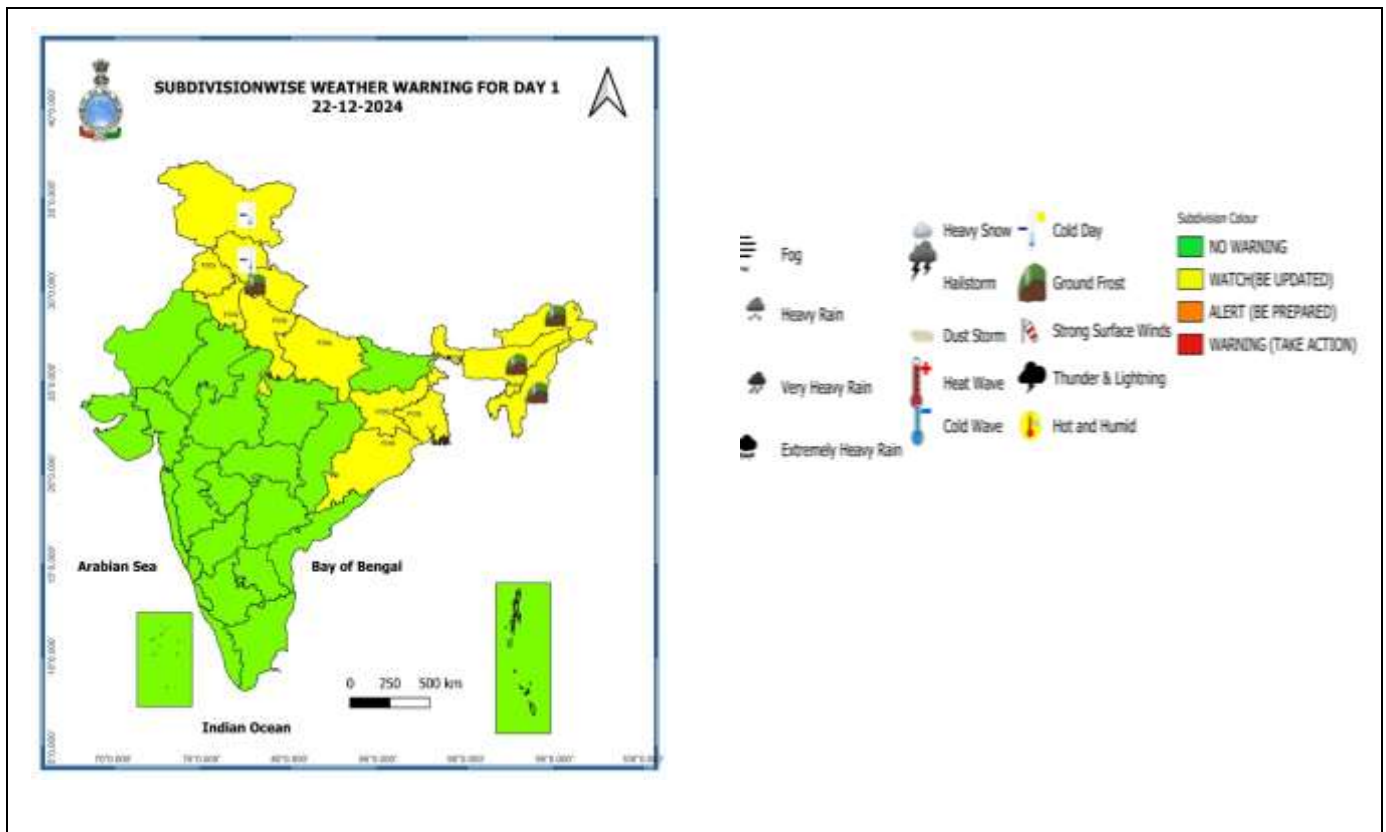


DATE/TIME	: IN UTC
IST	: UTC + 0530
KT	: NAUTICAL MILE/S/HOUR = 1.85 KM/HOUR
LPA	: LOW PRESSURE AREA
WML	: WELL MARKED LOW PRESSURE AREA
D	: DEPRESSION (17-27 KT)
DD	: DEEP DEPRESSION (28-33 KT)
CS	: CYCLONIC STORM (34-47 KT)
SCS	: SEVERE CYCLONIC STORM (48-63 KT)
VSCS	: VERY SEVERE CYCLONIC STORM (64-89 KT)
ESCS	: EXTREMELY SEVERE CYCLONIC STORM (90-119 KT)
SuCS	: SUPER CYCLONIC STORM (≥120 KT)

	LESS THAN 34 KT
	34-47 KT
	≥ 48 KT
	OBSERVED TRACK
	FORECAST TRACK
	CONE OF UNCERTAINTY

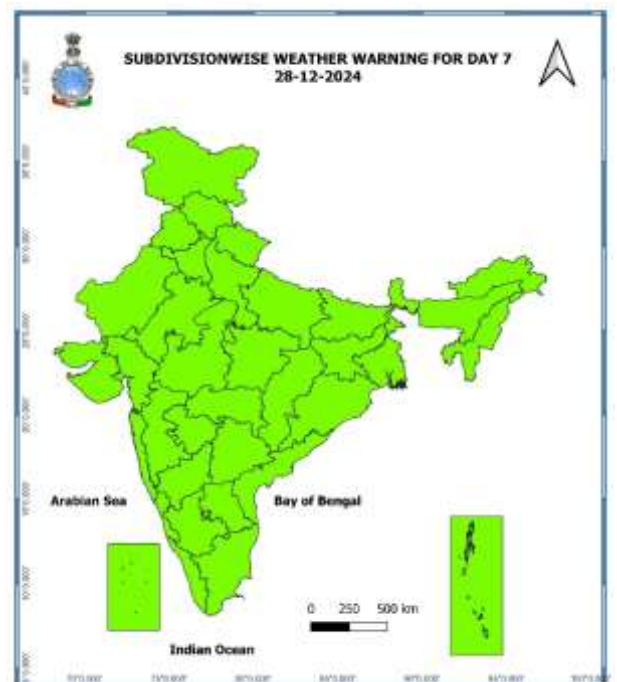
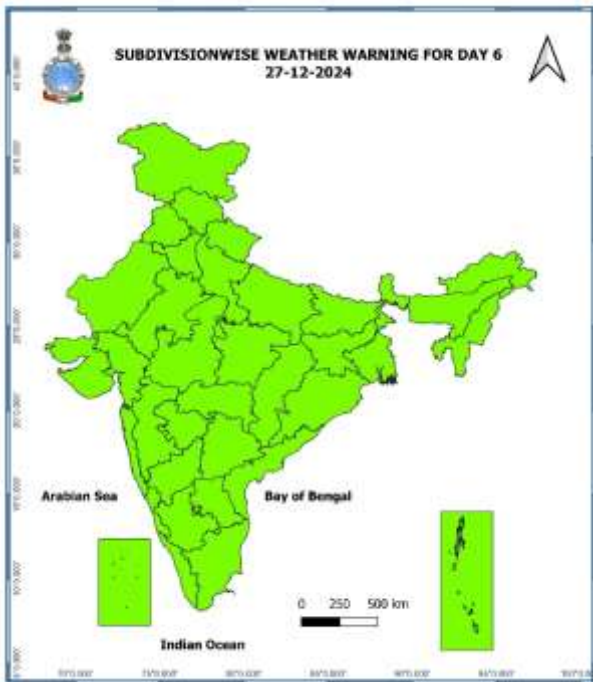
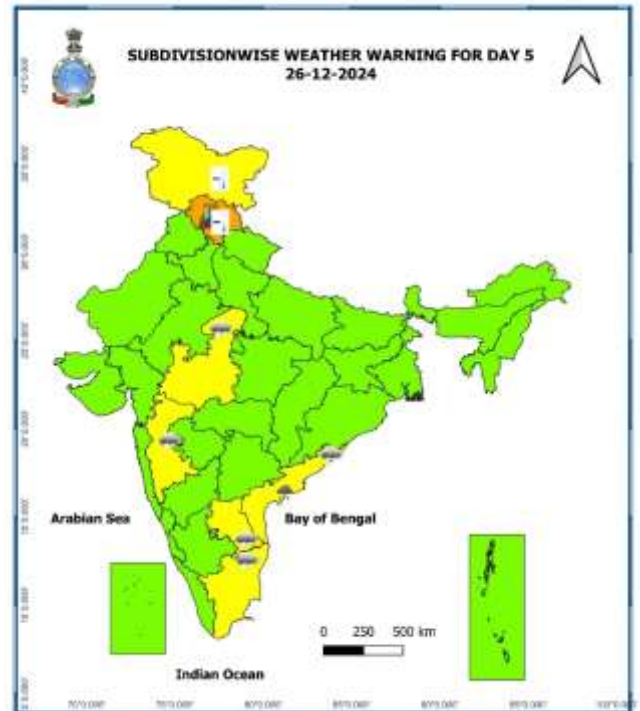
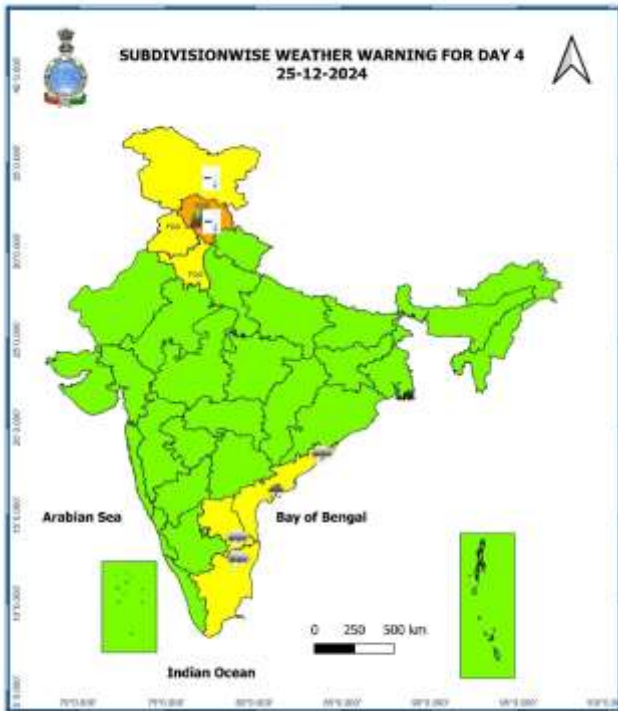
Contact: Cyclone Warning Division, Office of the Director General of Meteorology, India Meteorological Department, Ministry of Earth Sciences, E-mail: cyclonewarningdivision@gmail.com, Website: rsmcnewdelhi.imd.gov.in. Spatial rainfall distribution: Isolated: <25%, A few: 26-50%, Many: 51-75%, Most: 76-100%, Rainfall amount (mm): Heavy rain: 64.5 – 115.5, Very heavy rain: 115.6 – 204.4, Extremely heavy rain: 204.5 or more.

Weather Warning Graphics



Contact: Cyclone Warning Division, Office of the Director General of Meteorology, India Meteorological Department, Ministry of Earth Sciences, E-mail: cyclonewarningdivision@gmail.com, Website: rsmcnewdelhi.imd.gov.in. Spatial rainfall distribution: Isolated: <25%, A few: 26-50%, Many: 51-75%, Most: 76-100%, Rainfall amount (mm): Heavy rain: 64.5 – 115.5, Very heavy rain: 115.6 – 204.4, Extremely heavy rain: 204.5 or more.

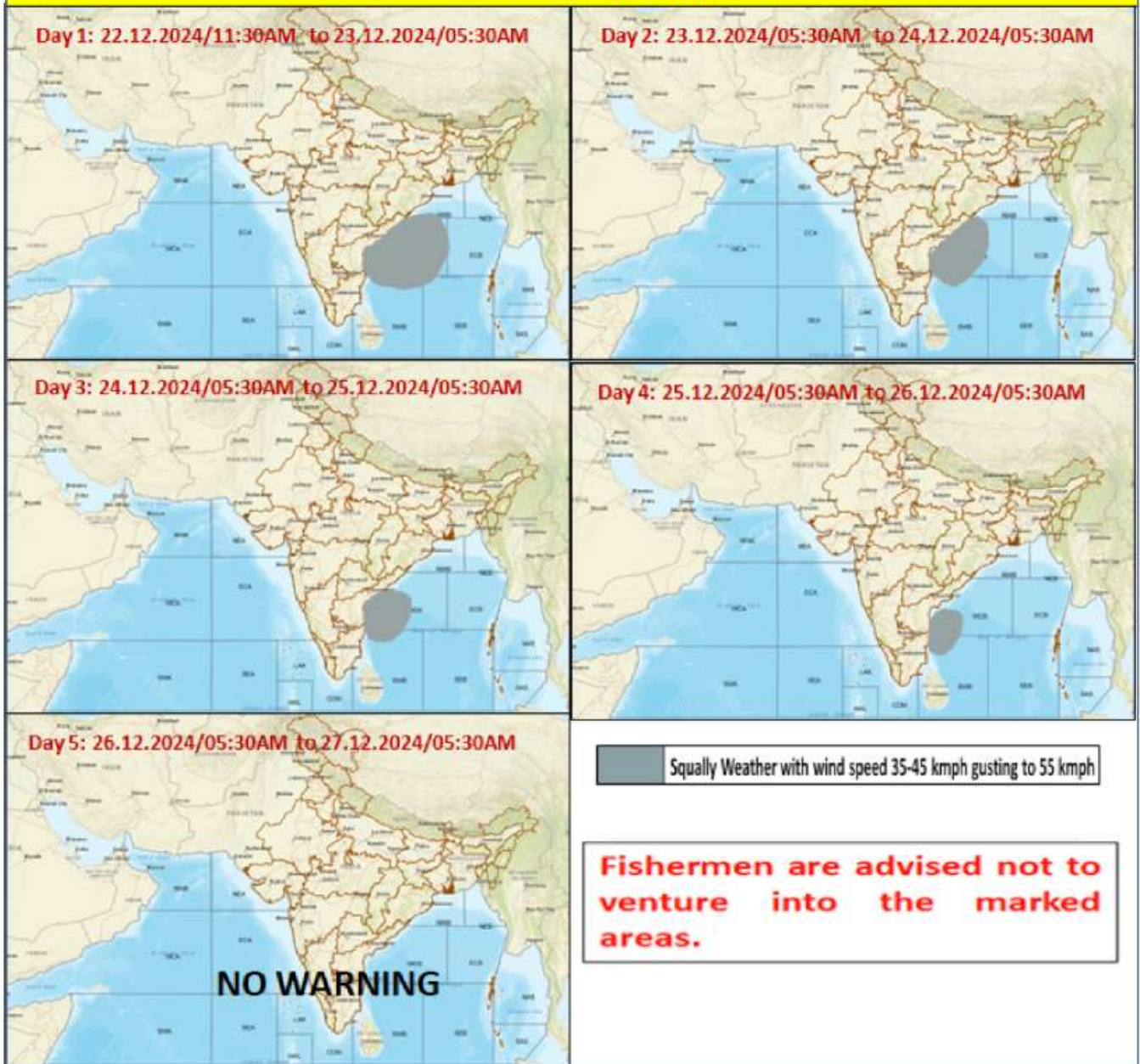
S



- Action may be taken based on **ORANGE AND RED** COLOUR warnings.
- Vulnerable regions likely urban and hilly areas action may be initiated for heavy rainfall warning.
- As the lead period increases forecast accuracy decreases

Contact: Cyclone Warning Division, Office of the Director General of Meteorology, India Meteorological Department, Ministry of Earth Sciences, E-mail: cyclonewarningdivision@gmail.com, Website: rsmcnewdelhi.imd.gov.in. Spatial rainfall distribution: Isolated: <25%, A few: 26-50%, Many: 51-75%, Most: 76-100%, Rainfall amount (mm): Heavy rain: 64.5 – 115.5, Very heavy rain: 115.6 – 204.4, Extremely heavy rain: 204.5 or more.

Fishermen Warning Graphics



Contact: Cyclone Warning Division, Office of the Director General of Meteorology, India Meteorological Department, Ministry of Earth Sciences, E-mail: cyclonewarningdivision@gmail.com, Website: rsmcnewdelhi.imd.gov.in. Spatial rainfall distribution: Isolated: <25%, A few: 26-50%, Many: 51-75%, Most: 76-100%, Rainfall amount (mm): Heavy rain: 64.5 – 115.5, Very heavy rain: 115.6 – 204.4, Extremely heavy rain: 204.5 or more.